



UCAN FLO-ROK® 6 SD is a high performance 1:1 pure epoxy chemical adhesive anchor specifically formulated for fastening threaded rod and rebar in cracked and uncracked concrete. It is also ideal for anchoring in solid rock and hard natural stone. FLO-ROK® 6 SD is suitable for dry, wet or flooded applications and is styrene free and VOC free.

**FEATURES:**

- ICC-ES® listed ESR - 3584
- ACI 318 category 1 anchor for cracked or uncracked concrete
- Tested in accordance to AC 308 for long term sustained load at standard and elevated temperature
- High strength pure epoxy adhesive
- Suitable for dynamic and vibration loading
- Seismic resistance
- Ideal for deep hole applications and close to edge fastening
- Smooth flowing, Low odour
- Styrene and VOC free
- Extended working time
- 2 years shelf life - when stored in the manufacturer's unopened containers at temperatures between 10 °C (50°F) and 25 °C (77°F)

**TYPICAL APPLICATIONS:**

- Structural steel base plate anchoring
- Vibratory loading applications
- Rebar doweling
- Cranes and lifting equipment
- Heavy machinery, racking and robotics installation
- Road and bridge construction
- Parking structure rehabilitation

**APPROVALS / LISTINGS:**

- ICC (ES)™ Listed (ESR - 3584)
- NSF Approved for use in potable water (NSF/ANSI 61)
- LEED Compliant (Credit 4.1)
- MTO MI 120
- MTQ Approved

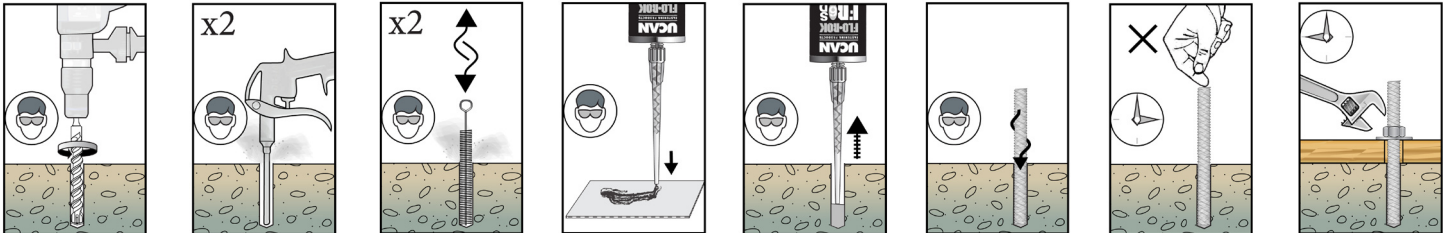
**TECHNICAL DATA:**

[www.tinyurl.com/ucanfr6d](http://www.tinyurl.com/ucanfr6d)



**INSTALLATION:**

To ensure optimal anchor performance, use **UCAN** ANSI compliant drill bits.





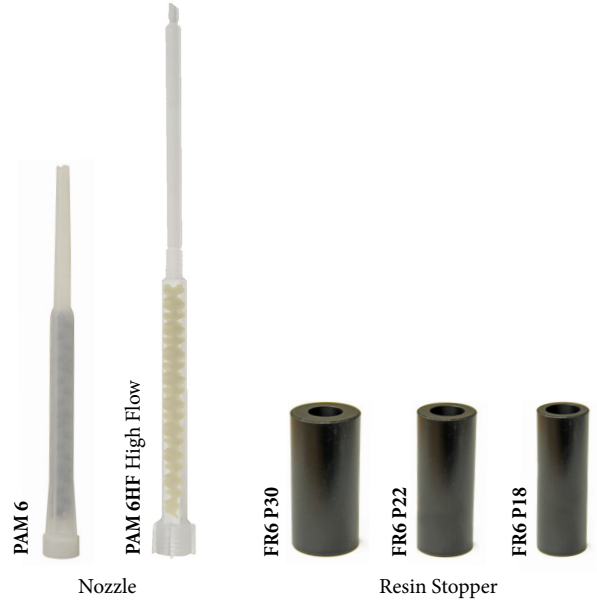
# FLO-ROK® 6 SD



Cartridge

### CURING TIME

Base Material	Temperature	Gel Time	Full Cure
4° - 9°C	40° - 49°F	20 min.	24 hours
10° - 15°C	50° - 59°F	20 min.	12 hours
15° - 22°C	59° - 72°F	15 min.	8 hours
22° - 25°C	72° - 77°F	11 min.	7 hours
25° - 30°C	77° - 86°F	8 min.	6 hours
30° - 35°C	86° - 95°F	6 min.	5 hours
35° - 40°C	95° - 104°F	4 min.	4 hours
40°C	104°F	3 min.	3 hours



PAM 6

PAM 6HF High Flow

FR6 P30

FR6 P22

FR6 P18

Nozzle

Resin Stopper

Part Number	Size	Cartridge Type	Case Qty.	Case Wt. (lbs)	Nozzle (ea.)	Dispensing Tool
FR6-20 SD	20.3 oz (600 ml)	Side by side	6	14	PAM 6 / PAM 6 HF	PA 2000 / PA2050

Each cartridge includes one PAM 6 static mixing nozzle

S.S. Wire cleaning Brush			
Part Number	Hole Diameter	Used For Rod	Used For Rebar
SBR 12	1/2"	3/8"	-
SBR 916	9/16"	1/2"	10M
SBR 34	3/4"	5/8"	15M
SBR 78	7/8"	3/4"	-
SBR 1	1"	7/8"	20M
SBR 118	1-1/8"	1"	-
SBR 114	1-1/4"	-	25M
SBR 138	1-3/8"	1-1/4"	-
SBR 112	1-1/2"	-	30M
SBR 134	1-3/4"	1-1/2"	35M



PA 2000 20oz. Manual Dispensing Tool



PA 2050 20oz. Cordless Dispensing Tool  
2 Batteries, Charger and case are included



SBR - 4" S.S. Wire brush



SBR EXT - 12" Extension



SBR HND - 12" Brush handle



PAM 6 EXT  
3/8" (9mm) Extension Tube



PAM 6 EXTW  
9/16" (14mm) X 120" Extension Tube



[www.tinyurl.com/ucanrok6](http://www.tinyurl.com/ucanrok6)

Subject to change without prior notice